

# Broadway Newsletter

Reaching over 2000 households in the Parish of Broadway

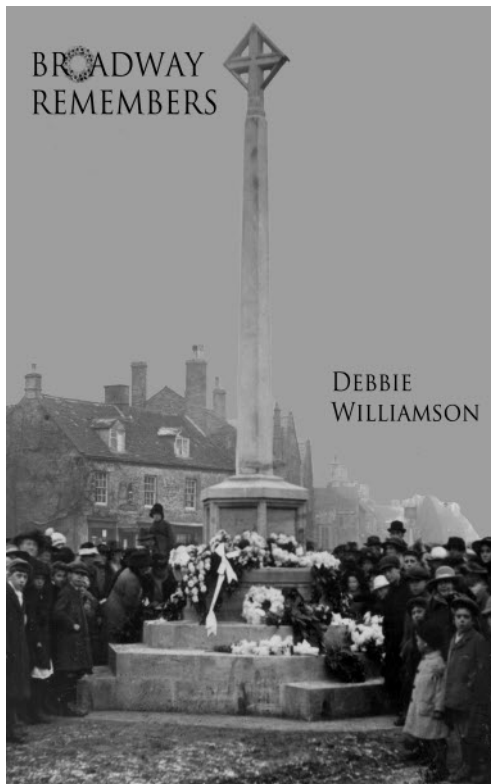
Issue 50 September/October 2014

## BROADWAY REMEMBERS

This newly published book, by Debbie Williamson, is a history of the Broadway War Memorial and the men commemorated on it, who lost their lives in the First World War. It is also a lot more, providing a fascinating insight into the period, ensuring that the book will appeal to readers interested in Broadway, military history and social history.

In the past, on Remembrance Sunday, Debbie would go to Coventry, where her grandmother, who died in the blitz during the Second World War, has her name inscribed on the memorial. Then a couple of years ago, Debbie attended the service in Broadway, where she lives, and when the names were read out, it made her wonder who these men were: what were their jobs and their lives in the village - this was the catalyst that inspired her book.

The result is a substantial volume, including 10 appendices, where each soldier listed on the me-



morial has a short biography, accompanied by interesting photographs. There are also stories of many of the men's comrades from Broadway, who served and returned. In 1914 the population of the village was only around 1,900, yet 300 men went to war, of which 17 per cent were killed. Debbie did most of the research herself, discovering, in some cases, information of which the families of the men were unaware, and she designed the book herself too: in all a considerable achievement.

Broadway Remembers is a not-for-profit publication, approved by the Imperial War Museum, with proceeds going to the Poppy Appeal. Debbie was given some funding by Broadway Parish Council and a Wychavon Centenary Grant. The book is available

from various outlets in Broadway, including the Tourist Office, Blandford Books, Treasure Trove and Tisanes Tea Rooms, as well as from Amazon.

## CAN YOU HELP?

We live in New Zealand and last year we revisited Broadway. My father was born in Evesham and we used to visit Broadway most years while on holiday. One year my father took us into a little pub in Broadway, but sadly when we returned last year it had been demolished to make way for new housing but the empty sign was still on the roadside. To get back to my story, inside the pub and behind the bar was a photograph of the local football team and this would have been before the Second World War as dad signed up just before his 19th birthday and went into the Worcester Regiment. Dad was in this photo as he used to play for the football team.

We were hoping to get a copy of the photo for our genealogy folder so we went to the local library and also to the football clubrooms - but we had no luck in either place.

Having read your Newsletter, we would be most grateful for any help your readers could possibly give. My father's name was Syd Yates and he lived in Evesham. We realize that there might not be many left of my dad's generation, but someone might know of the photo.

Many, many thanks for taking the time to read this - we look forward to hearing from you.

Diane Copson

*If you can help, please email the newsletter and we'll forward your message to Diana.*

## BROADWAY DOG GROOMERS

A professional dog grooming service where our number one priority is your pet. Lucie operates from a well equipped parlour in Broadway.

The service is intended to be relaxing and enjoyable, enabling your dog to look at its very best.

Pick up or drop off available, late nights and weekends to suit your busy lifestyle.

Going away on holiday ? need a day out shopping? out at work all day? Please contact me for my doggy day care and dog care for when you go away on holiday.

I will have your pooch in the comfort of my own home so you do not need to worry when you are away. I can offer them two walks a day, lots of cuddles and kisses and company 24/7

Please contact me to book your pooch's space **07807666859**

## BROADWAY STATION AND BRIDGES UPDATE

The last couple of months have seen steady progress at the station, and good progress has been made on the signal box, with the floor joists in place and bricklaying under way on the upper floor. We have recovered more bricks from a number of locations, including Avonmouth and Gloucester, and now have sufficient to complete the platform walls. Platform 1 is now almost complete, with the exception of the gap required for vehicular access to the site. A new visible feature by the road bridge is the recently-installed signal gantry complete with semaphore arms. Work has also been undertaken to clear and properly demarcate the northern and eastern boundaries of the site. Away from Broadway, progress has also been made on refurbishment of the footbridge which is to be installed at the station. Refurbishment work on the bridges between the current railhead at Laverton and Broadway has been making good progress.

In view of the importance of access to Broadway via Evesham Road and Station Road, the Railway has offered an early completion incentive bonus to the contractor for this bridge and at the time of writing (1 August) he is significantly ahead of programme. By the time this newsletter hits the streets traffic should be flowing again along this route into the village. Attention will then turn to the Childswickham Road bridge. Regrettably, this will require the closure of the road, but this will be for a shorter period than for Station Road as the bridge is in better condition. On 31 July a meeting was held with Childswickham Parish Council to explain the planned road closure and the work which needs to be done on this bridge. With the experience gained by the contractor at Broadway we hope that the planned Childswickham bridge closure of 10½ weeks will be significantly bettered. There will be a diversion route agreed with Highways, and ample signage to the same standard as that applied to the Broadway bridge.

If you are interested in what is happening and have internet access, two of the Railway's volunteers are maintaining a blog giving details of the work, which can be found at: <http://bridgestobroadway.blogspot.co.uk/>

## WELCOME RETURN OF THE GREYFRIARS CONSORT

This young group of Cambridge choral scholars is making a welcome return to St Eadburgha's church on Friday 5th September, at 7.30pm. The professionalism shown by the singers in the delightful concert they gave this time last year was much admired by all who heard them.

Tickets will be on sale at the door. Enquiries - please telephone 01386 852570.

## COTSWOLD WARDENS WALKS IN SEPTEMBER

### Wardens' Way & Windrush Way Circular Walk 4 -

Thursday 18th September - Moderate

A series making the most of Ways linking Winchcombe and Bourton-on-the-Water. Following the Wardens' Way from Bourton through Lower and Upper Slaughter to Naunton, returning on the Windrush Way via medieval Lower Harford. Bring a packed lunch. 5.5 hours: 10 miles.

Start: 10:00 am Bourton on the Water War Memorial. OS Map ref SP 167 207.

### Yet More Manor Houses in the North Cotswolds -

Saturday 20th September - Moderate

From Adlestrop through the Oddingtons to Mangersbury, then on to Bledington for lunch before returning through Daylesford. Pub lunch available in Bledington. 7 hours: 11 miles.

Start: 10:00 am Adlestrop Village Hall Car park (Honesty box). OS Map ref SP 241 272.

### Fabulous Ford Figure of Eight - Tuesday 30th September - Moderate

Two circuits centred on the Plough. Our choice of route on the day will make the most of some heavenly scenery and inevitably include the Upper Windrush Valley. Walkers may choose am, pm or both. Approximate afternoon start 1.30pm, from same car park. Pub lunch optional. 3 to 6 hours: 4 to 9 miles.

Start: 10:00 am Ford, The Plough Inn (car park opposite). OS Map ref SP 088 294.

PLEASE use appropriate footwear as some walks may be steep and muddy in places.

EASY - Length may vary but terrain is mainly flat (level);

MODERATE - includes some hills and rough ground. STRENUOUS - may be rough underfoot and ascents and descents may be steep. We welcome guide and hearing dogs - sorry, others not allowed.

Walks are free although we do invite donations to help fund our conservation and improvement work.

The Wardens run a full programme of guided walks throughout the Cotswolds. For more information see [www.escapetothecotswolds.org.uk](http://www.escapetothecotswolds.org.uk) or Tel: 01451 862000, also for any changes to arrangements such as due to extreme weather.

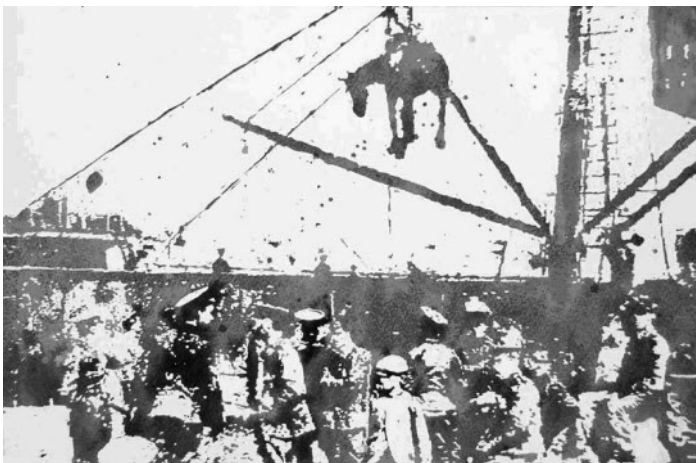
## HOW TO SUBMIT:

|                                     |  |
|-------------------------------------|--|
| <b>Issues:</b>                      | Nov/Dec 2014, Jan/Feb 2015, Mar/Apr 2015, May/June 2015  |
| <b>Deadline:</b>                    | 1 <sup>st</sup> of the preceding month for everything. Please send phone number with events.   |
| <b>Editor:</b>                      | Philippa Wakelin 01386 852 747 <a href="mailto:editor@broadwayvillage.org.uk">editor@broadwayvillage.org.uk</a> Kirtlands, High Street, Broadway, Worcs. WR12 7AL. Please advise before sending photographs.   |
| <b>Associate Editor:</b>            | Barbara Baker  |
| <b>What's On/Village Directory:</b> | Julie Cox Cox 01386 898162 <a href="mailto:calendar@broadwayvillage.org.uk">calendar@broadwayvillage.org.uk</a>  |
| <b>Web links &amp; Ads:</b>         | Micaela Schmitz 01386 898162, See guidelines on our website; <a href="mailto:ads@broadwayvillage.org.uk">ads@broadwayvillage.org.uk</a> <a href="http://www.broadwayvillage.org.uk/community/newsletter/index.htm">www.broadwayvillage.org.uk/community/newsletter/index.htm</a> |
| <b>Design and Publishing:</b>       | Tez & Jane Brown, <a href="mailto:design@broadwayvillage.org.uk">design@broadwayvillage.org.uk</a>   |
| <b>Delivery:</b>                    | Terry Reid; 01386 858911; <a href="mailto:delivery@broadwayvillage.org.uk">delivery@broadwayvillage.org.uk</a>   |

## JEREMY HOUGHTON EXHIBITION

1 August – Jan 2015 The Ashmolean Museum Broadway will have a new exhibition from the 1st August of local artist Jeremy Houghton's work, titled 'Retrospective'. The works will be displayed in the exhibition space on the top floor of the museum and are done in oils and watercolours which explores movement, space and time.

Jeremy, who is familiar face around Broadway, has brought together a collection of his work from over the last decade exploring his various styles and subject matters. The exhibition includes pieces from the London 2012 Olympic games and from during 2009 when he was painting H.M. The Queen. His exhibition will be on display until the end of January 2015. The museum and shop are open Tuesday to Sunday from 10am until 5pm. Admission charges apply.



Jeremy, who is familiar face around Broadway, has brought together a collection of his work from over the last decade exploring his various styles and subject matters. The exhibition includes pieces from the London 2012 Olympic games and from during 2009 when he was painting H.M. The Queen. His exhibition will be on display until the end of January 2015. The museum and shop are open Tuesday to Sunday from 10am until 5pm. Admission charges apply.

## BROADWAY ARTS FESTIVAL BURSARIES Grants up for grabs for local Arts Students

Each year the Broadway Arts Festival Trust has a surplus of funds, some of which will be divided and allotted to arts students living within the Parish of Broadway or WR12 postcode. We are inviting arts students studying Fine Art, Applied Arts, Music or the Performing Arts at degree or post graduate level to apply for a Student Arts Grant to assist with further education costs for courses commencing September 2014.

To apply you must be: Aged 18 or over on 1st September 2014.

A permanent resident or, if living away from home during term time, have maintained a residential address within the Parish of Broadway or WR12 postcode for a minimum period of 4 months immediately prior to 1st September 2014.

Enrolled on either a full time degree level or post-graduate course at a university or college and studying an arts subject.

The grant amount awarded will be at the discretion of the Trustees of the Broadway Arts Festival. Grants will be awarded for one academic year only.

*Application Forms and more information can be downloaded from the Broadway Arts Festival website: [www.broadwayartsfestival.com](http://www.broadwayartsfestival.com). Applications close at midday on 3rd September 2014*

### Dear Editor,

POO POO POOCHIE BYE BYE - AN APPEAL FROM A BROADWAY RESIDENT.

Please, please let's have a clean fresh start.....As I write this, we, who use the Dog Sh\*\* Alley, Back Lane are in a state of high anticipation.

Dog Sh\*\* Alley is about to be resurfaced. We are hoping for less water, better drainage and a new surface to walk upon. We residents can hardly wait for the end of this week (10 August) when the work will be completed.

So, please stop your dog from christening the new surface or its surrounds with dog p\*\*, take a bag with you and remove

## LUKE THOMAS'S NEW COOK BOOK-

by Micaela Schmitz

A companion and I were at Luke's Broadway for the launch of Luke Thomas' new book, entitled Luke's cookbook : 100 Classics given a modern makeover.

The starters we sampled along with a glass of fizz included: Crispy ham hock, cracked mustard and honey, rocket and pine nuts; torn mozzarella, heritage tomatoes, basil and rapeseed dressing; pan roasted scallops, warm salad of pancetta, apple, peas and watercress. We also had gnocchi with sunblushed tomatoes, wild mushroom and summer truffles - this was my favourite as the texture was wonderfully interesting and I had to consult the menu to see what it was. In addition we had a chicken satay (which was not on the menu) which had a lovely strong peanut flavour tempered with coconut milk - like a Thai satay.

I found many of the items lovely to eat, and we both noted the similarity in approach to Jamie Oliver, with an emphasis on a small number of good quality, fresh ingredients. Then I realised that the cookbook's introduction specifically mentions Luke's being impressed by Jamie. When we considered the matter, we realised that Luke is of the generation that Jamie was setting out to inspire.

Quite a few items in the cookbook were of the type you could make yourself, but then again, I'm not sure I actually want to know how much oil is used in fish and chips, and surely it's a good food to let someone else make! Which may be the point...? The cookbook also features, like Jamie's, quite a few photos of the chef at work, and emphasises his youth at every opportunity. We wish Luke every success, long after the rosy glow has faded from his youthful cheek.

the offending sh\*\*. This 'motion' is not much to ask of dog owners.

Many thanks, Joan Clinch, The Back Passage, Dog Sh\*\* Alley.

PS If the situation does not improve, I will reinstate my dog sh\*\* competition in next month's newsletter.....details to follow.

PPS Quick update - 9.30am, 11 August-the new surface has already been christened....!

# What's On - Regular Events:

|                              |   |
|------------------------------|---|
| Mon-Fri term time 8am-5:30pm | Little Friends of St Marys Breakfast, Preschool and Afterschool club; Rachel 01386 853337 |
| Mon-Fri t/time 8:55am-2:55pm | Broadway & Towerview Playschool, Jude 01386 853780  |
| Mon-Sat 10am-4pm             | Tourist Information; Russell Square, 01386 852937   |
| Mon 9:15 & 10:30am           | Cotswold Pilates; Methodist Church Hall, Michele 07929 035262                             |
| Mon 10am-3pm                 | Signpost/Age UK alternating; 4 Russell Square, 01386 859029                               |
| Mon 10.15am                  | Zumba; Childswickham Village Hall, For info & other classes Tess 07815 949970             |
| Mon 11-11:30am               | Bounce & Rhyme for babies; Broadway Library, 01905 822722                                 |
| Mon 6:30-7:30pm              | TaeKwonDo for families and grown ups; Youth Centre, Neil 07517 437300                     |
| Mon 7:00-8:30pm              | Girl Guides (ages 10-14) term time only; Ruth Jones 01789 772328                          |
| Mon 7:00-8:30pm              | Yoga; Broadway 1st School, Marion Moore 01386 853715                                      |
| Alt Mon 10am                 | M4C - for men to share coffee & chat; Tisanes Coffee Shop, Nigel 01386 858097             |
| Last Mon of the month 7:30pm | Broadway Garden Club; URC Hall, Susan Morris 01386 852428                                 |
| Tues 9:15am                  | Fitness Pilates; Lifford Hall, For info & other classes Tess 07815 949970                 |
| Tues 4-8pm                   | Relate (by appointment); Signpost 4 Russell Square, 01386 859029                          |
| Tues 6-8pm                   | Broadway Youth Club (ages 5-19); Broadway Youth Centre, 01386 853013                      |
| Tues 6-8pm                   | T'ai Chi mixed ability class; URC Hall, Val 01608 652835                                  |
| Tues 6:30pm                  | Slimming World; Lifford Hall, Janet 01386 765629  |
| Tues 6:45-9pm                | Broadway Whist Drive Club; The Court, Russell's Estate, Patricia 01386 853110             |
| 1st Tues of the month 2-4pm  | Table Games Afternoon for all ages. Refreshments; URC Hall, Enqs 852618 Transport 854759  |
| 2nd Tues 8:30am              | Breakfast Book Group; Russell's Restaurant, Elizabeth 01386 858588                        |
| 2nd Tues 10:00-11:00am       | Short Walks; from The Court Back Lane, followed by coffee, Kim 07854717430                |
| 2nd Tues 3:00-4:00pm         | Come and Meet Each Other (tea); St Michael's Church, 01386 853061                         |
| 3rd Tues 8:45 am             | Book Club; Margaret 01386 852120  |
| Wed 10am-12 Noon             | Knitting Circle; Tisanes Tearooms   |
| Wed 10am-4pm                 | Bric a brac sale; Broadway (GWR) Station; John 01386 584366                               |
| Wed 2-4pm                    | Neighbours on Line, Computer and Internet classes; URC hall, Mark 07949 296738            |
| Wed 6:00-7:15pm              | Broadway Beavers (ages 6-8); Anne 01386 830505  |
| Wed 7:30-9:00pm              | Broadway Music Makers Rehearsal; URC Hall, Martin 01242 603553                            |
| Alt Wed 2-4 pm               | Family History Sessions; Broadway Library, 01905 822722                                   |
| 1st Wed 7:30pm               | Childswickham Women's Institute; Childswickham Memorial Hall, Marilyn 01386 854661        |
| 1st Wed. 12-2 pm,            | Evesham Dementia Café; St Mary's Parish Hall, St Egwin's Rd, Evesham, Helen 01684 891455  |
| Last Wed 2:00pm              | Broadway Library Readers group, 01905 822722  |
| Last Wed 7:30pm              | Broadway Natural History Society; Methodist Hall, 01386 852747                            |
| Thurs 10am-3pm               | Signpost; 4 Russell Square, 01386 859029  |
| Thurs 10:30am-12noon         | Rural Read Book Group; Stanton Guildhouse, For current book phone Susan 01386 584357      |
| Thurs 1:30-3pm               | Babytime; Apple Vale Children's Centre, 01386 859039                                      |
| Thurs 6-8pm                  | Broadway Youth Club (ages 5-19); at Broadway Youth Centre, 01386 853013                   |
| Thurs 6-7:15pm               | Broadway Cub Scouts (ages 8-10); Anne 01386 830505  |
| Most Thurs 8:45pm            | Live Music (Jazz/Blues); The Crown & Trumpet, 01386 853202                                |
| 1st Thurs 10:00am            | Broadway Embroidery Group; Methodist Hall, Gill 01386 830604                              |
| 1st Thurs 3-4pm              | Cancer Support Group; Signpost, 4 Russell Square, 01386 859029                            |
| 1st Thurs 8:00pm             | Royal British Legion; Bowling Green Clubhouse   |
| 2nd Thurs 2:00pm             | North Cotswold U3A Open Meeting; Willersey Village Hall, Sonia 01386 852211               |
| Last Thurs 1-3pm             | Citizens Advice Bureau (appointment advised); Signpost, 4 Russell Square, 01386 859029    |
| Fri 6:30-8:00pm              | Pilots (ages 4-18); Also on Sundays 10:30am, info tel Mark 07949 296738                   |
| Fri Monthly 10am-3pm         | Quiet Days; Stanton Guildhouse, For info & dates call 01386 584357                        |
| Sat 10am-4pm                 | Bric a brac sale; Broadway (GWR) Station; John 01386 584366                               |
| Sun 11am-3pm                 | Tourist Information; Russell Square, 01386 852937   |

*This is a free service offered by the Broadway Communications Group. The Group takes no responsibility for non-deliverability. Please check with the event organisers to confirm details*

## BROADWAY WINE GROUP

Broadway Wine Group started in September 2013. We meet on a monthly basis in members' homes to enjoy, discuss and learn about wine. No experience of wine is necessary.

The meetings start at 7 pm, on the first Wednesday of the month and last around 2 hours. Each meeting has a theme - a country, a grape or particular wine area.

Maree Speakman, a Wine Educator, qualified to Level 4, one step off a Master of wine, introduces the wines. She has lectured in Worcester and at the Cotswold Conference Centre. She is involved in running Pershore Wine Society. She also runs private wine tutoring courses.

Maree's wine evenings cater for all levels of expertise, the aim is to have fun whilst learning. Participants bring one of the wines selected and a snack is provided at half time. Wines are

tasted and discussed with Maree adding extra information, as required. The event costs £10.

Subjects covered include:-

How to taste wine, Classic grape varieties, Wine producing regions of the world

We usually have between 10 - 14 people attending. There is room for a few more. Some people come every month, others less regularly. Everyone is welcome.

If you require further information about Maree's current programme or want to attend her Pershore group, please ring Maree on 01386 553373 or e-mail her [winespeak@avonhouse.plus.com](mailto:winespeak@avonhouse.plus.com).

If you require further information about the Broadway Group, please ring 854914 or e-mail [joanlowe81@googlemail.com](mailto:joanlowe81@googlemail.com). Cheers! Joan Clinch

## JOHN BARTON - The Barbara Baker interview

I first met John Barton when I was with a tour visiting Michael de Navarro's garden at Court Farm. John was standing to the side, answering questions, receiving compliments and observing reactions, because he is the full-time gardener. John has worked in the High Street for 30 years and lived there most of the time too: he is fascinating, outspoken and passionate.

"Gardening was always a hobby, which I enjoyed with my grandfather and at school. Then, in 1984, I married Chris, and with 2 children, and another on the way, we needed a new start somewhere. I got a job as gardener with Mr and Mrs Reed at Hawstead House and lived in the cottage there. Next, I worked for the Misses Barries at Orchard Farm, and when they both sadly died, I became gardener for Michael and moved into our current Cottage within the grounds.

I like living on the spot, because to do a job like this, it has to become your garden, without pushing out the owners. It has to be a love affair, something you want to do - a project. It is not a job, it is a passion. You get to know every blade of grass and I'm grateful that I have been treated like one of the family here all along.

When I came here it was Michael and Jill's (Michael's late wife) plan to restore the garden back to what Alfred Parsons (the original designer), wanted. We did different parts, one by one. For instance, we decided to completely rebuild the overgrown nut walk. Fifteen years later, there it is, a complete arch, as Parsons intended. Now we are going to double the size of the herbaceous border- it is a privilege planning this.

I am also doing my own garden which is in the old Laundry Cottage. The design and planting will reflect the main garden, and I hope people will come and see it on future tours of Court Farm. It will be of the same standard, but with a little of my own personality in it. I try to encourage people to do what they want in their gardens, even if it's a bit quirky. In my job, you must never forget that the garden you work in is someone else's home. If you come up with a sensational idea and they say 'no', you need to accept that.

The thing I like best about my job is being in God's backyard; being close to Him. As a lad I was a good Christian but I went away from God for 27 years. Then, in 2003, I was diagnosed with Motor Neurone Disease. People in a church in Broadway prayed for me and through their faith my symptoms stopped. In 2009, I felt that God was calling me back to Himself and I had to obey. Now I have a passion for the value of life and am invited to preach in churches. I also work with young people on the streets who are self-harming, drug abusers and devil-worshippers.

If I just worked in the garden, there would be a danger of becoming a recluse. That is why I work with young people. I hope we will be able to have a series of retreats here in the garden, along with spiritual guidance in the evenings. I am one of the church leadership team at Elim Christian Centre in Evesham. On October 18th we will be taking over Marilyn's Nightclub for eight hours of praise and worship. I think it is brilliant because a long time ago I used to work as a DJ! It is amazing how things have come around."

*John will be holding a Christian Course he has written, at the Lifford Hall, on September 25th for seven weeks each Thursday evening at 7.30pm.*

## CYCLING IN BROADWAY

With the arrival of the Tour of Britain on September 10th, there has never been a better time to discuss how to make cycling a normal thing to do in Broadway - for any person of any age or level of fitness - by creating a safe/safer cycling environment within the village. The whole community should be encouraged to adopt/maintain a healthy lifestyle through activity and exercise by developing a structure of cycling activities which encourage individuals to cycle regularly and set themselves easy to achieve personal goals to aspire to. It should be expected that cycling would enhance community spirit and lead to a lifelong enjoyment of cycling. How can this be achieved?

- Let's promote a "family cycling is normal" culture within the village
- Contact the Parish Council to help set up a working group to think through cycling and mobility scooter issues, and to make recommendations.

A cycling vision for Broadway might include:

- Providing an environment where adults and children can learn to ride a bicycle in traffic free conditions
- Introducing family and individuals to safe on-road cycling
- Leading short rides on roads with more traffic and potential traffic hazards
- Encouraging riders to aspire to ride greater distances in incremental steps
- Encouraging all riders to experience and enjoy the fun of competition
- Encouraging off-road cycling

If you are interested in making a real difference to your community, please contact the Parish Council in writing at 5 Russell Square, Broadway WR12 7AP, or by e-mail at:

[broadway.parish.council@unicombox.co.uk](mailto:broadway.parish.council@unicombox.co.uk)

*Don't forget to turn out on September 10th to cheer on the riders in the Tour of Britain. They will be entering along Leamington Road, then going along the High Street before turning left at The Green and continuing up the Snowhill Road.*

## BROADWAY HISTORY SOCIETY

We are proposing to form a much needed BROADWAY HISTORY SOCIETY, if you are interested in being part of this exciting new project please contact:

Debbie Williamson 01386 858841

[djtanserwilliamson@btinternet.com](mailto:djtanserwilliamson@btinternet.com)

Or Mary Smith 01386 853278 [mezzonan@talktalk.net](mailto:mezzonan@talktalk.net)

We would be delighted to hear from you!

# What's On, One-Off Events:

|                               |   |
|-------------------------------|---|
| Fri 5 Sept 7.30pm             | Cambridge Choral Scholars concert; St Eadburgha's Church, Tickets on the door                     |
| Sun 7 Sep                     | GWR footplate & brake-van rides (pre-book) Winchcombe Stn 01242 621405                            |
| Sun 14 Sep                    | GWR Classic Vehicle Day Toddington Stn 01242 621405   |
| Thurs 11 Sept 7-10.30pm       | Schubert Quintet, dinner then lighter music; Dumbleton Hall Hotel, pre-bookings only 01386 881240 |
| Sat/Sun 20/21 Sep             | GWR Day Out with Thomas 01242 621405  |
| Tues 23 Sept 9.30-11.30am     | Reflexology 10 week course; Broadway library, for more information 01905 822722                   |
| Tues 23 Sept 12.30-2.30pm     | Jewellery Making Basics 4 week course; Broadway library, for more information 01905 822722        |
| Thurs throughout Oct/Nov 11am | Tours of the Ashmolean Museum Broadway, small additional entry fee.                               |
| Thurs 2 Oct                   | Mosaics with Victoria Harrison; Stanton Guildhouse, Info & booking 01386 584357                   |
| Sun 5 Oct                     | GWR footplate & brake-van rides (pre-book) Winchcombe Stn 01242 621405                            |
| Sat 11 Oct 10am-12noon        | Coffee morning for Alzheimer's Society; Fladbury Church, Helen 01684 891455                       |
| Sat 11th Oct 5pm              | Talk with Jeremy Houghton & Jim Brook on Jeremy's current exhibition; Ashmolean Museum B'way      |
| Thu 30 Oct                    | GWR Halloween 'Steam and Scream' Specials (no need to book) 01242 621405                          |
| Sat 15 Nov 1pm                | GWR Fish & Chip Special (pre-book) Toddington Station 01242 621405                                |

*This listing is a free service offered by the Broadway Communications Group. The Group takes no responsibility for non-deliverability. Please check with the event organisers to confirm the details of events.*

## BROADWAY FOOD FESTIVAL

Sunday 14th September sees the first Broadway Food Festival, a really special event with the emphasis on top quality local produce. It's a unique opportunity to meet the people who grow and create the very best local food and drink that can be found all year round in Broadway's shops and eateries.

Local growers and farmers will be showing and sampling seasonal produce and meat, and we're looking forward to trying delicious local ales, ciders, perries and fruit juices. Artisan coffee roasters, flour millers, bakers, beekeepers and cheese makers will explain their crafts - with tasting opportunities to enjoy! And who can resist the lure of handmade confectionary?

Masterchef finalist Andrew Kojima, and chefs from the best hotels and restaurants in the area, will show us great ways to use fantastic local products in a programme of practical cooking demos, and there will be a fabulous, fun drop-in chocolate workshop for all ages, as well as a fun competition for children beforehand, with judging on the day (details from local first schools and Prego).

Also on show around The Green will be a magnificent collection of splendid vintage and classic cars. We're expecting to see some splendid vehicles, including a 1929 Lagonda, a 1927 Grand Prix Bugatti and a 1922 Rolls Royce Silver Ghost.

Broadway's eating places will provide their usual delicious food and drink, supplemented by food-to-go on The Green. With the very best local food and drink at its core, this promises to be an unforgettable day for the whole family.

*Sunday 14 September 2014, 10am-4pm, in the marquee on The Green, Broadway WR12 7AA. Admission FREE.*



### Advertising Manager, Broadway Newsletter:

This is good for someone who wants to build experience in ad management but with a light workload. You need to be computer literate with some ability to deal with graphics and attachments, and be good at keeping to deadlines. Some phone and email follow ups required.

Ring 01386 898162

Our next issue will be out in November, so if there's anything you would like readers to know about **Christmas events** you are planning, make sure you let us know in good time.

### Church Services and other events

**St Michael's C of E:** 1<sup>st</sup>, 3<sup>rd</sup>, 5<sup>th</sup> Sun 10.30am; 2<sup>nd</sup> & 4<sup>th</sup> Sundays 8am/10:30; Wed 10.30am.

Sun 5 Oct Harvest Festival service 10.30am

**St Saviour's Catholic:** Sat 5pm only - Vigil Mass.

Daily Mass: Tues 10.00am; Fri 11:00am.

**Methodist:** Sun 10:30; Fri 10am Prayer; 10.30am-12:00 noon Morning Coffee

**United Reformed Church (URC):** Sun 10:30am, 2<sup>nd</sup> Tues 11am Service of Wholeness & Healing  
Sun 21 Sept Harvest Festival service 10.30 all welcome.

**Baptist Church,** Chipping Campden: Sun 10:30 at Chipping Campden School (crèche and Junior Church 4-16 years), 6:30pm at the church.

**St Eadburgha's:** Services are held at 6:00pm on Sundays from Easter Day until Harvest Festival service on 5th October.